

Ambis DALI

Product Features

- High efficiency up to 125 lm/W
- Replacement for T8/T5 fluorescent tubes
- Homogeneous light appearance without hot spot
- Easy-click fixation technique and mounting clips for convenient installation
- Electrical installation with options for linking
- IP66 and IK10 protection rate
- CE & RoHs compliant
- Enhanced Hybrid dimming, with varying PWM frequency
- DALI control input
- Reliable quality, manufacture capability, and global logistics by Delta Group 49-year establishment

Applications



Parking



Cold Storage



Warehouse



Work Area

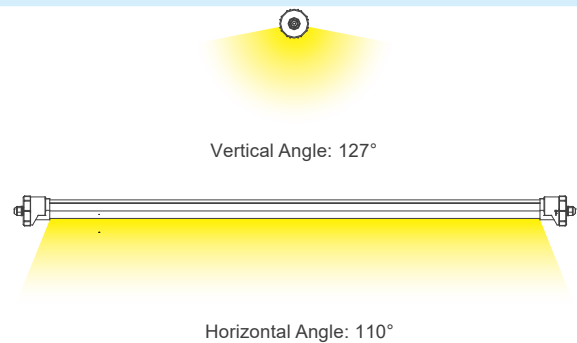
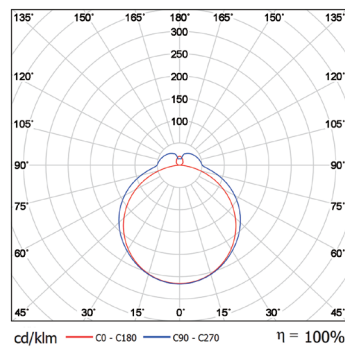
www.delta-emea.com



DELTA
Smarter. Greener. Together.

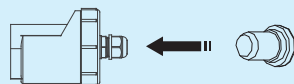
	PG550IEH1D
Length (mm)	1600
Lumen Output (lm)	6250
Input Voltage (V)	AC 220-240 V
Power (W)	50
Efficacy (lm/W)	125
CRI (Ra)	> 80
CCT (K)	4000 ± 250K (within 4 McAdam.), 3000K / 5000K / 5700K available
Operating Temp (°C)	-20°C to +40°C
Max. units per circuit (10A ABB MCB s200 series)	15
Electrical safety class	Class II
Protection	IP66 / IK10
Compliance	IEC 61000-3-2 ClassC Harmonic (1-40) / THD (Total Harmonic <20%) / CE / RoHS
Tests	Glow wire test at 850°C / 4kV high-pot voltage insulation
Installation	3-pole 2.5 mm ² through-wiring
Driver	DALI 1.0
Lifetime	>100,000 hrs L80/B10 at Ta 25°C; >50,000 hrs L90/B10 at Ta 25°C
Warranty	5 Years
Weight (kg)	1.7

Photometry/
Light Distribution



Accessories

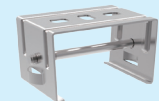
- Sealing plug 1 pc per luminaire (for sealing the cable gland and the end luminaire in installation circuit)



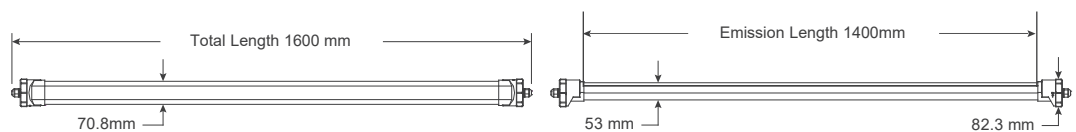
- Mounting clips 2 pcs per luminaire



- Optional: Anti-vandalism SS316L mounting clips (set of 2 pcs)



Dimensions



Specifications are subject to change without notice.

2020/04/30

Delta Electronics Europe

Zandsteen 15
2132 MZ Hoofddorp, The Netherlands
TEL: +31-20-655-0900
FAX: +31-20-655-0999

For more product information and sales inquiries, please contact: sleu@deltaww.com

www.delta-emea.com/ledlighting